



EncapSulite®

# WaterGuard® LED

WATERTIGHT LED LIGHTING



EncapSulite **WaterGuard LED** wash-down fixtures are ideal for a wide variety of applications including food processing, dairies, poultry plants, meat processing, grocery stores, seacoast areas, car washes and parking garages.

**WaterGuard** fixtures hold up to 1200psi high pressure wash-down while not collecting debris or water. Each fixture is equipped with plastic mounting brackets and power cord ready for easy installation. Teflon™ protection available for extreme conditions. All **WaterGuard** fixtures are UL, UL-EPH, and NSF certified for food safety.



## FEATURES

- Tubular Design – Low Maintenance
- 50,000hr Long-Life LEDs
- 5000K (Other Kelvin Temps Available)
- Multi-Voltage 120-277V 50/60Hz
- Limited 3-Year Warranty
- IP67, 1200PSI Wash-Down
- UL1598, UL8750, NSF, FDA, USDA

## APPLICATIONS

- Food Processing
- Poultry plants
- Dairies
- Grocery stores
- Poultry Plants
- Meat Processing
- Car Washes

**WARRANTY:** EncapSulite WaterGuard LED watertight fixtures are guaranteed for 3 years.

TOLL FREE (877) 227-8756 | WEB [www.encapsulite.com](http://www.encapsulite.com)



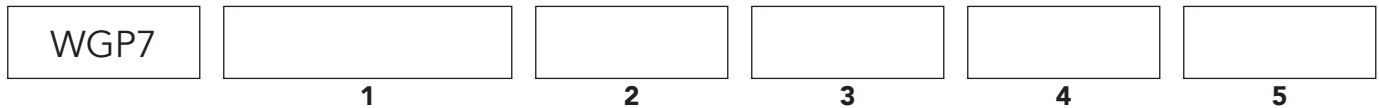
DATE	PART #	TYPE	PROJECT
------	--------	------	---------



\* Fixture displays Emergency Power Option

### ORDERING INFORMATION

EXAMPLE: WGP74LED25W50KCLPMB



### ORDERING LEGEND

#### 1. LENGTH

- 2LED13W: 2 foot (13 watts)
- 2LED18W: 2 foot (18 watts)
- 4LED25W: 4 foot (25 watts)
- 4LED36W: 4 foot (36 watts)
- 8LED50W: 8 foot (50 watts)
- 8LED72W: 8 foot (72 watts)

#### 2. KELVIN

- 40K: 4000 Kelvin Temperature
- 50K: 5000 Kelvin Temperature

#### 3. FINISH

- CL: Clear
- RF: Red Filter
- BF: Blue Filter
- AF: Amber Filter

#### 4. MOUNTING

- PMB: Plastic Brackets
- SS: Stainless Steel Hanging Straps
- SMB: Stainless Steel Brackets

#### 5. OPTIONS

- FEP: FEP Protection for Tube
- 3P: 3P Male Receptacle
- 3P6W: 3P Receptacle / 6ft Yellow Whip
- EP: Emergency Power (90 Minutes)  
*Available Only for 4ft and 8ft Models.*

Fixtures are equipped with a SJTOW 18AWG 8ft power cord with plug.

PART NUMBER	LENGTH (IN)	DIAMETER (IN)	WATTAGE	CRI	KELVIN	VOLTAGE	MIN TEMP	MAX TEMP	LUMENS
WGP72LED13W40K	24	2.75	13	> 80	4000	120-277	-40°F	110°F	1500
WGP72LED18W40K	24	2.75	18	> 80	4000	120-277	-40°F	110°F	2100
WGP72LED13W50K	24	2.75	13	> 80	5000	120-277	-40°F	110°F	1500
WGP72LED18W50K	24	2.75	18	> 80	5000	120-277	-40°F	110°F	2100
WGP74LED25W40K	48	2.75	25	> 80	4000	120-277	-40°F	110°F	2700
WGP74LED36W40K	48	2.75	36	> 80	4000	120-277	-40°F	110°F	4300
WGP74LED25W50K	48	2.75	25	> 80	5000	120-277	-40°F	110°F	2700
WGP74LED36W50K	48	2.75	36	> 80	5000	120-277	-40°F	110°F	4300
WGP78LED50W40K	96	2.75	50	> 80	4000	120-277	-40°F	110°F	5400
WGP78LED72W40K	96	2.75	72	> 80	4000	120-277	-40°F	110°F	8700
WGP78LED50W50K	96	2.75	50	> 80	5000	120-277	-40°F	110°F	5400
WGP78LED72W50K	96	2.75	72	> 80	5000	120-277	-40°F	110°F	8700



## REPLACEMENT PARTS

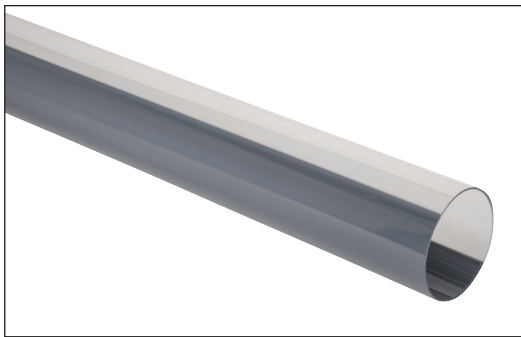
### TUBE

*Replacement Tube Enclosure*

PWG051: 2ft Replacement Tube

PWG050: 4ft Replacement Tube

PWG009: 8ft Replacement Tube



### END CAPS

*Includes Stainless Steel Hardware*

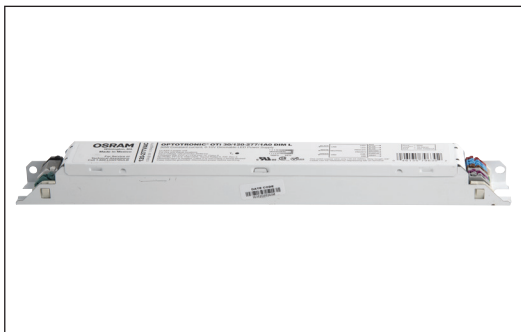
PWG033: (2) End Caps with Hardware



### DRIVER

*Replacement LED Driver*

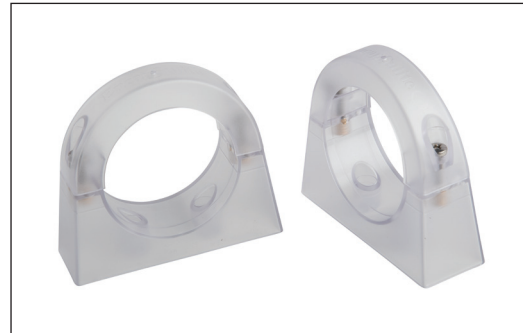
PWG023: Replacement LED Driver



### MOUNTING OPTIONS

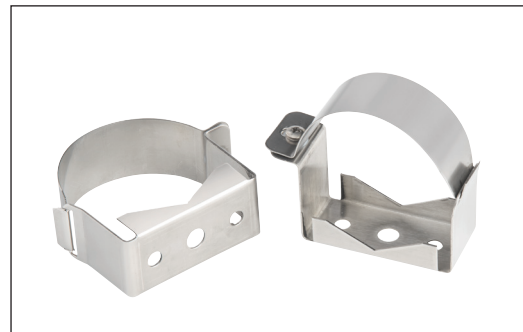
*Plastic Mounting Bracket*

PWGB70: Clear Plastic Bracket



*Stainless Steel Mounting Bracket*

PWGBSMB70: SS Bracket



*Stainless Steel Hanging Strap*

PWGBSS70: SS Hanging Strap

